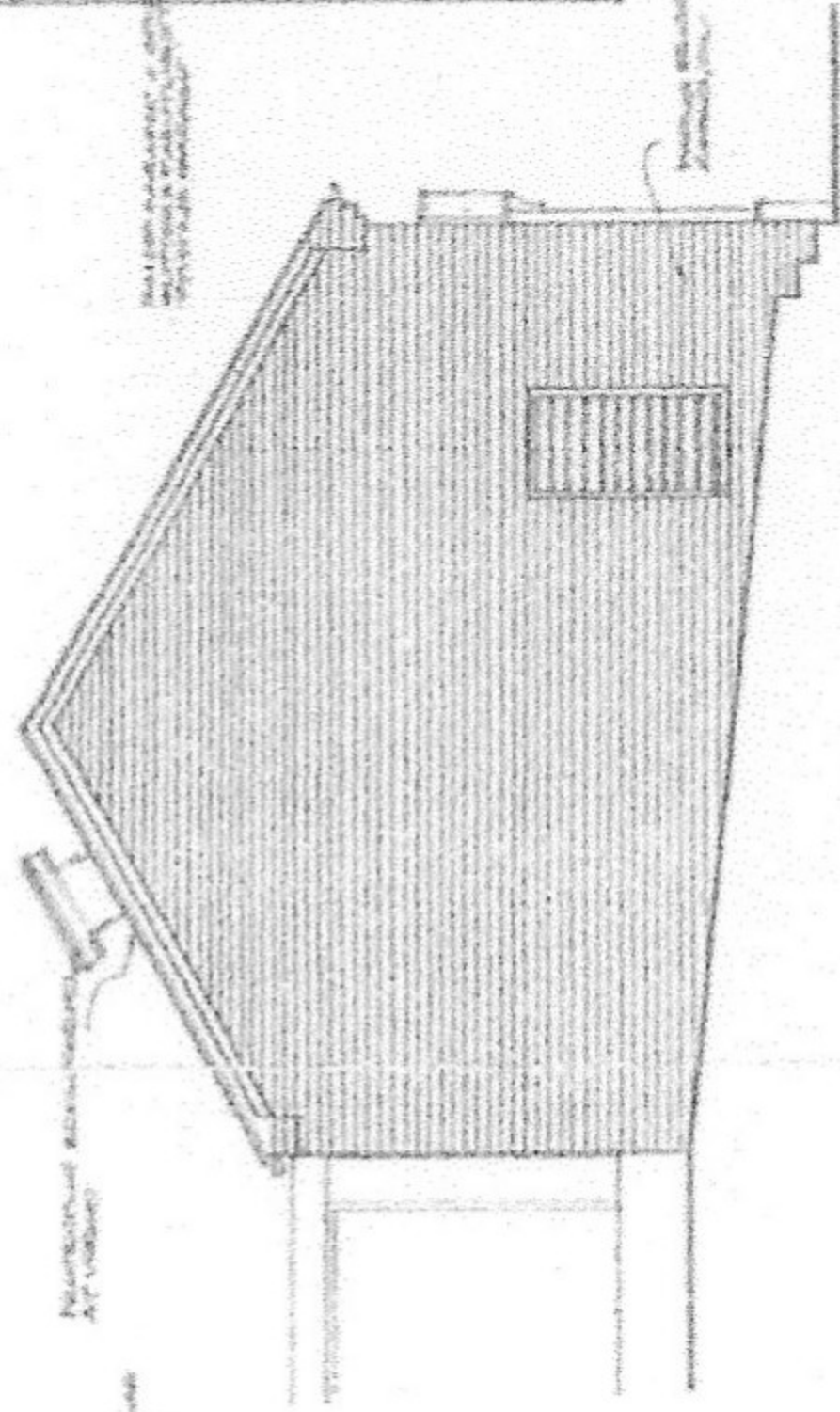
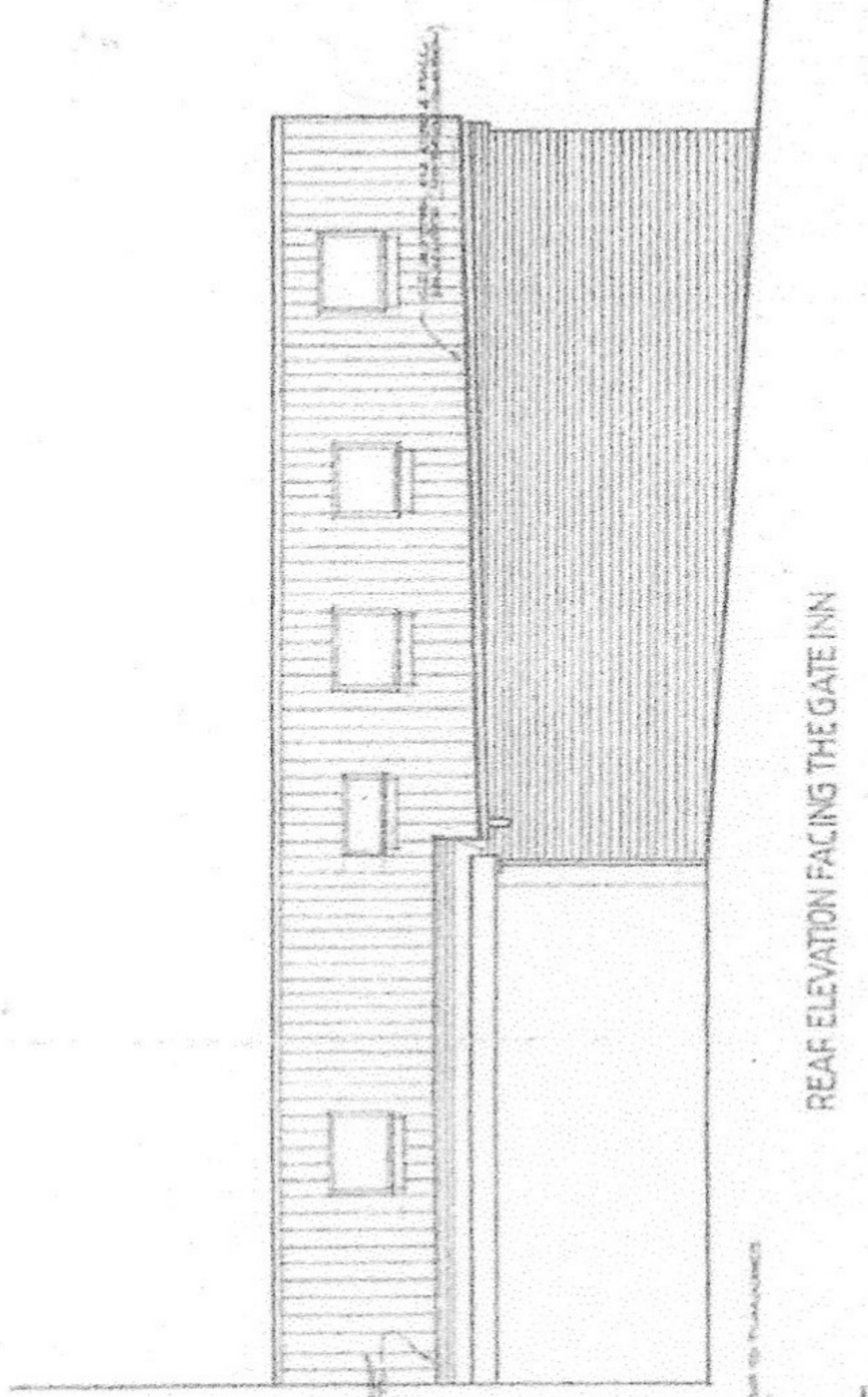


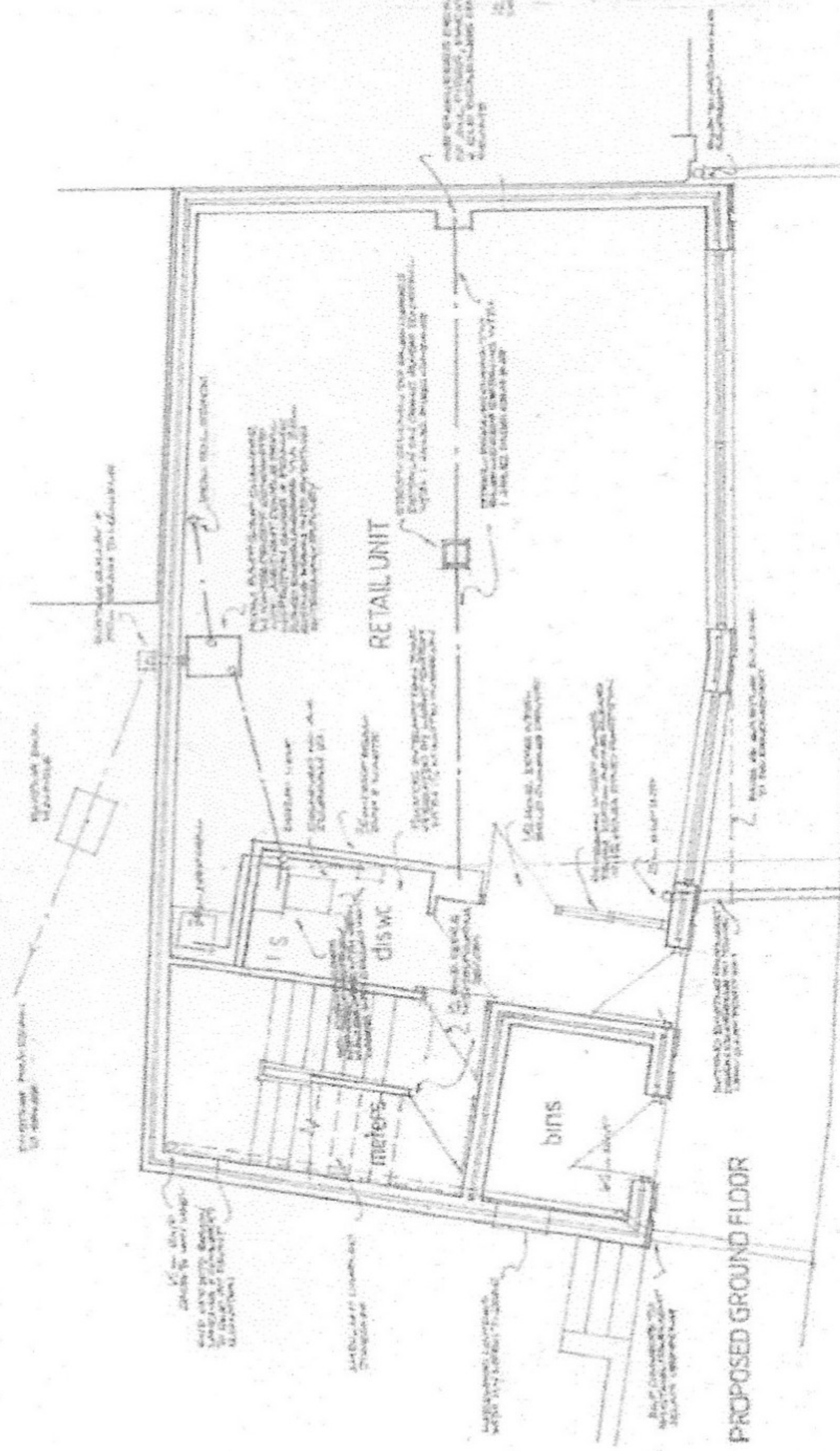
FRONT ELEVATION TO MAIN STREET



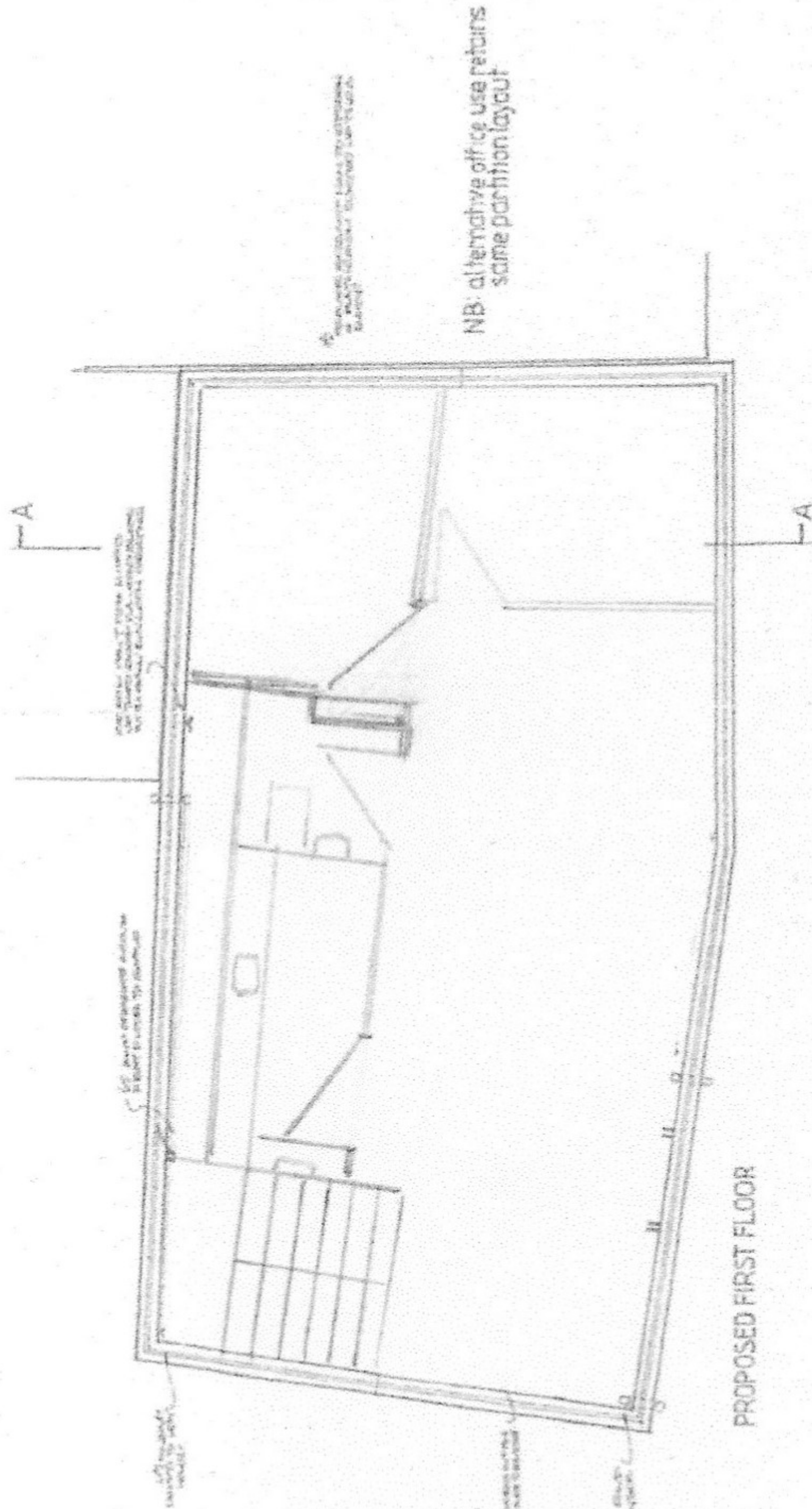
SIDE ELEVATION TO PUB FORECOURT



REAR ELEVATION FACING THE GATE INN



PROPOSED GROUND FLOOR



PROPOSED FIRST FLOOR

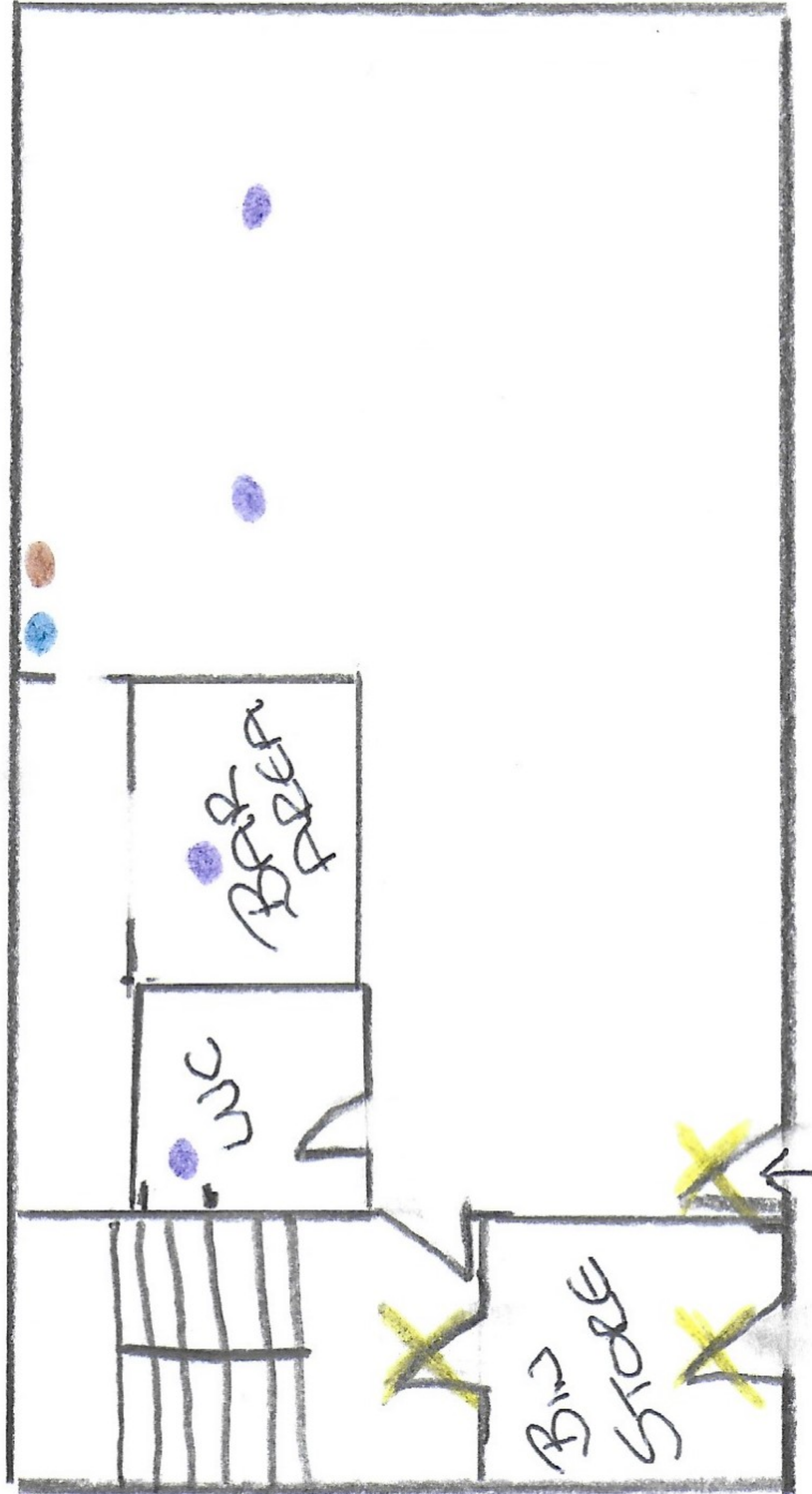
PROPOSED REDEVELOPMENT OF FORMER LOCKUP PREMISES AT 23-27 MAIN STREET KIMBERLEY TO NEW RETAIL UNIT WITH APARTMENT/OFFICES OVER 1:50

21/00278/PREM/22/07/2021-1

GROUND FLOOR

- SMOKE ALARMS
- WATER FIRE EXTINGUISHER
- CO₂ FIRE EXTINGUISHER
- ✕ FIRE EXIT DOORS

STUD WALL
ADDED
↓

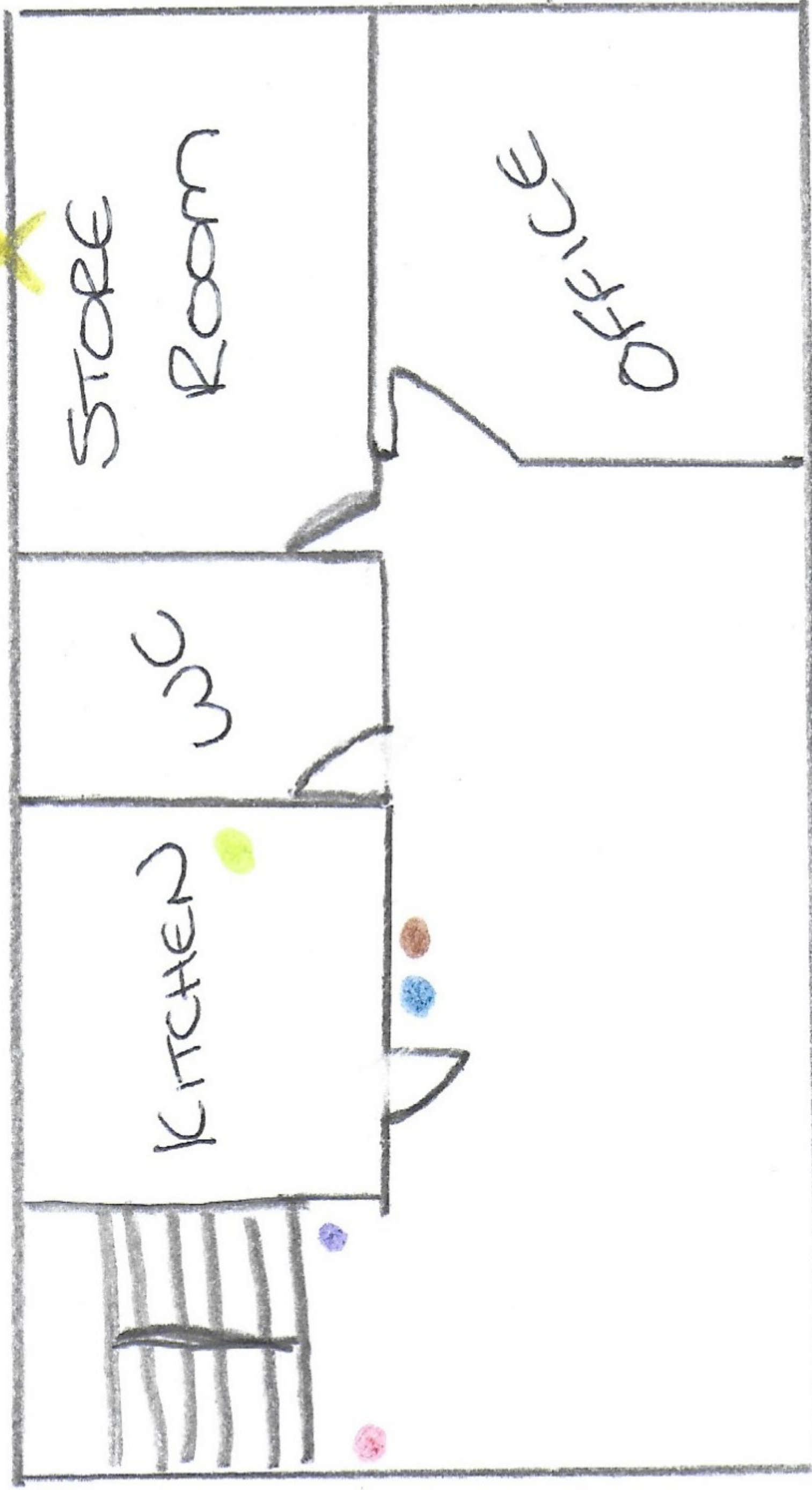


ACCESS
& EGRESS

21/00278/PREM/22/07/2021-2

SCALE - 1mm = 100mm

FIRST FLOOR



- - SMOKE ALARMS
- - FIRE ALARM POINT
- - FIRE BLANKET
- - WATER FIRE EXTINGUISHER
- - CO₂ FIRE EXTINGUISHER
- ✕ - FIRE EXIT THROUGH WINDOWS ONTO FLAT ROOF.

SCALE - 1mm = 100mm

21/00278/PREM/22/07/2021-3